

Includes models

MAS1020-01
 MAS1220-01
 MOS1220-01
 MGS0615-01

SINGLE PEDESTAL METAL HOSE REEL



INSTRUCTION MANUAL

Introduction

Thank you for purchasing a Heavy Duty Metal Hose Reel.

The range of single pedestal reels have been designed using the highest quality, heavy gauge materials and are fitted with purpose specific hose and swivels. Models available are for Air/Water, Oil and Grease

Important Information

PLEASE READ THIS SAFETY INFORMATION CAREFULLY BEFORE USE.

Read and retain this instruction manual to assist you in the operation and maintenance of this product.

'Cautions' are listed throughout this manual to advise of actions that may cause damage to your equipment.



CAUTION

Make sure the line pressure does not exceed the rated operating pressure of your model hose reel, refer specifications.



CAUTION

Exposure of the skin directly to pressurized air or fluid could result in severe bodily injury.



CAUTION

Before carrying out any maintenance turn off and disconnect the supply line to the reel and carefully release the hose line pressure.

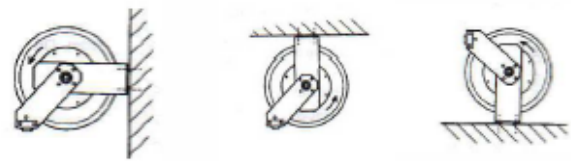
Installation Procedure

- 1) For overhead ceiling mounting: Install reel at least 3m (10 feet) above the floor.
- 2) You will need to purchase the appropriate hardware for mounting your new reel.
- 3) The reel base has four 1/2" (12.7mm) drilled holes for mounting on a suitable flat surface.
- 4) The reel is supplied with a hose guide roller bracket. The roller bracket position may be changed depending on the reel mounting position. Figure 2 shows "Typical mounting positions". If the bracket position needs to be changed, do the following:



- A) Pull out some hose and let reel latch.
- B) Remove the 4 bolts that attach the guide roller bracket to the support post.
- C) Rotate guide roller bracket to correct position, then replace all bolts and tighten.

TYPICAL MOUNTING POSITIONS



WALL

CEILING

FLOOR

- 5) Using the four holes in the base, mount the reel in the desired location. Be sure to use the appropriate hardware and tighten securely.
- 6) Apply Teflon tape or pipe sealant to supply line threads, attach to reel and tighten. The other end of the oncoming line can now be connected to the desired supply source. Tighten stopper bolts, and unlatch the reel.
- 7) Apply Teflon tape or pipe sealant to the outlet fitting on the hose, then attach the desired tool or nozzle. Check connections for leakage, also check hose reel for correct operation. (See Operation section)

Maintenance Procedures

8) If hose stopper adjustment is required, pull hose from the reel and allow to latch at desired length. Loosen stopper bolts and slide stopper to a position close to the hose guide. Retighten stopper bolts and check operation.

HOSE INSTALLATION

- 1) Securely stabilize the reel.
- 2) Facing the swivel fitting side of the reel, turn the drum clockwise by hand until the rewind spring is tight, and the drum has latched. As an extra precaution while installing hose, secure drum in the latched position.
- 3) Insert end of hose through roller guides and feed through the opening in the drum flange.
- 4) Use Teflon tape or pipe sealant on hose fitting threads, screw fitting into swivel and tighten. **Note:** To avoid damage to the swivel, use a wrench to support the swivel shaft while tightening the hose.
- 5) Attach hose stopper on the other end of hose, near the outlet fitting.
- 6) Carefully release drum latch, and slowly allow the hose to rewind into the reel.

Note: Final spring tension adjustment is accomplished by adding wraps of hose around the drum (to increase tension) or taking wraps off hose (to decrease tension). Refer to 'Adjustment of Spring Tension'.

OPERATION

- 1) Check reel for correct operation by slowly pulling out the hose. A "clicking" noise will be heard every half revolution of the drum.
- 2) To latch the reel, pull out the hose and allow it to retract after hearing the first, second or third "click".
- 3) To unlatch, slowly pull out the hose until the "clicking" noise stops, then let the hose retract until the hose stop rests against the hose guide.



CAUTION

Always hold on to the hose while it is retracting.

- 4) Periodically check the hose condition for wear or damage, and check the swivel fitting for leakage. Replace any worn, damaged or leaking parts.

ADJUST SPRING TENSION

- 1) Pull out approximately 6ft or 2m of hose and allow the drum to latch.
- 2) Remove hose stopper from hose, and feed hose back through guide.
- 3) Wrap the hose one time around the drum to increase tension or un-wrap hose one time to decrease tension.

- 4) Re-insert hose through guide, and install stopper onto hose end.

- 5) Unlatch the drum and check tension. Pull hose from reel, and adjust stopper position if necessary,

REPLACEMENT OF SWIVEL SEALS

- 1) Turn off and release hose line pressure
- 2) Disconnect supply line from swivel inlet
- 3) Using the correct size spanner, unscrew the swivel shaft and remove the complete swivel assembly from the reel axle

Note: Swivel seals on grease the reel cannot be replaced.

- 4) Remove circlip from swivel, and take apart. The swivel can be removed from the reel, but this is not necessary unless installing a new swivel.
- 5) Replace the seals and reassemble Swivel.
- 6) Use Teflon tape or thread sealant on thread connections when re-fitting swivel to reel.
- 7) Re-connect inlet supply line, and check all connections for leaks.

REPLACEMENT OF HOSE

- 1) Turn off and disconnect the supply line and release hose line pressure.
- 2) Pull out all the hose and lock the reel in this position.



CAUTION

Make sure the reel drum is securely locked and cannot rotate back.

- 3) Remove two hose clamps from hose on drum flange.
- 4) Carefully disconnect hose from swivel joint on side of reel, or male fitting in axle center and remove old hose.
- 5) Feed new hose through guide and opening in drum, and connect swivel. Re-install two hose clamps, on inside and outside of drum flange. Install stopper on other end of hose in same position as before.
- 6) Carefully release the drum latch, and slowly allow the hose to rewind into the reel.

Note: For final spring adjustment refer to section "Adjust Spring Tension".

REPLACEMENT OF SPRING CANISTER

- 1) Pull out the hose approximately 1m (3ft) and latch reel.
- 2) Remove the outlet nozzle, gun or tool and hose stopper.

Maintenance Procedures

3) Carefully unlatch the reel and firmly hold the drum. Allow the drum to slowly unwind until it stops.

4) Remove the swivel, circlip and spacer.

5) Remove the top four nuts ONLY located on the support post side of the drum.



CAUTION

Do not attempt to remove the spring canister nuts. (Located under the nuts that hold the spring canister in place)

6) Pull the spring canister off the drum shaft.

7) Reverse the above procedures to re-assemble.

8) Re-tension the reel by turning the drum three complete turns clockwise (from the swivel side) and latch the drum.

9) Feed the hose through the hose guide, fit the hose stopper, then unlatch the drum and allow the hose slowly to retract

REPAIR LATCH PAWL

1) Remove the hose stop and allow the drum to release all its tension with the hose on the spool.

2) When there is no tension on the spring, the main axle nut on the pedestal side can be released and the drum with hose removed exposing the latch pawl and its associated components.

3) To re-tension after any repairs have been made and after the drum has been reassembled to the pedestal, follow the "Adjust Spring Tension" instruction.

Troubleshooting Guide

TROUBLE	CAUSE	REMEDY
Hose will not fully retract	A) Outlet nozzle, gun or tool is too heavy	A) Add spring tension. See "Adjust Spring Tension"
	B) Spring is fatigued	B) Add spring tension. See "Adjust Spring Tension" Replace Spring canister if required, see "Replacement of Spring Canister"
	C) Replacement hose is too long	C) Fit correct length hose (Refer Hose to specifications)
Hose will not retract at all	A) Spring has broken or has lost all tension	A) Replace Spring canister. See "Replacement of Spring Canister"
Reel will not latch	A) Incorrect operation	A) Reel latches on first second or third "click". After the third click the reel automatically rewinds
	B) Latch assembly is worn.	B) Replace the latch assembly
Fluid leaks from the swivel	A) Swivel seals are worn	A) Replace swivel seals. See "Replacement of Swivel Seals".

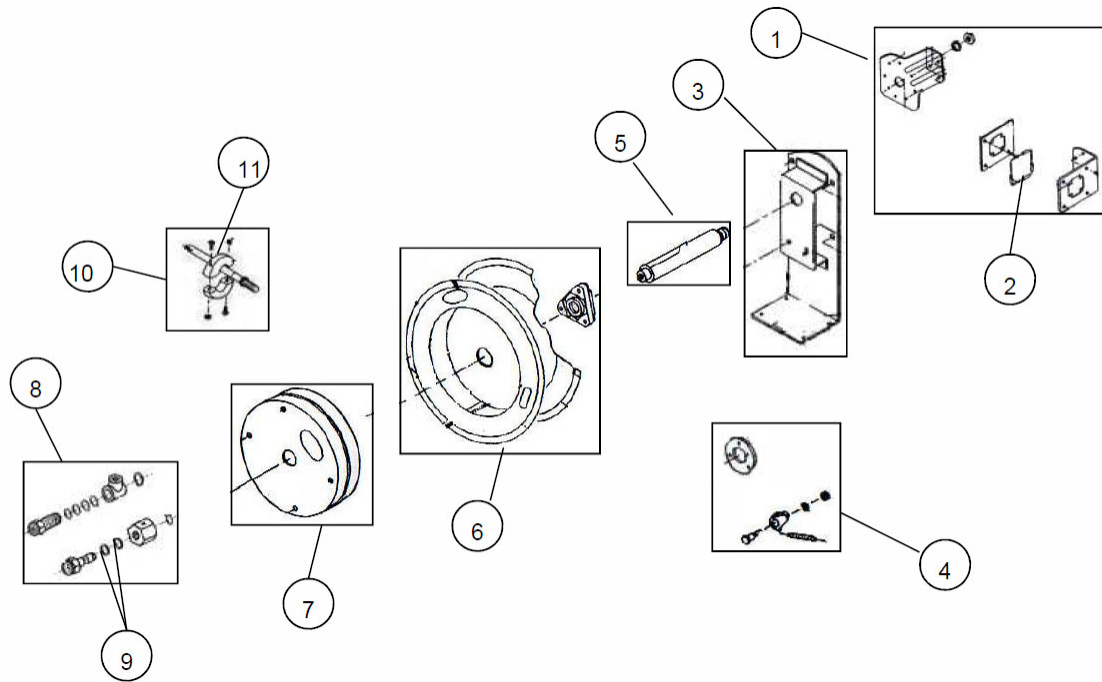
Product Specifications

Model	Description	Hose Specifications			Reel colour	Reel Inlet Thread Size	Hose Outlet	Max Operating Temperature	Weight
		I.D	Length	Max Working Pressure					
MAS1020	AIR	3/8" (10mm)	20m	300 PSI	Blue	3/8" BSP	3/8" BSP	60°C	21/23 kg
MAS1220	AIR	1/2" (12.5m m)	20m	300 PSI	Blue	1/2" BSP	1/2" BSP	60°C	21/23 kg
MOS1220	OIL	1/2" (12.5m m)	20m	2000 PSI	Blue	1/2" BSP	1/2" BSP	100°C	21/23 kg
MGS0615	GREASE	1/4" (6mm)	15m	5000 PSI	Blue	1/4" BSP	1/4" BSP	100°C	21/23 kg

MATERIAL SPECIFICATIONS

	AIR / WATER	OIL	GREASE
SWIVEL SHAFT	BRASS	BRASS	BRASS
SWIVEL BODY	BRASS	BRASS	BRASS
SEAL TYPE	O'RING	O'RING	O'RING
SEAL MATERIAL	NITRILE (NBR)	VITON	VITON
REEL BODY	POWDER COATED MILD STEEL	POWDER COATED MILD STEEL	POWDER COATED MILD STEEL
HOSE MATERIAL	PVC	RUBBER	RUBBER

Spare Part Diagram



Spare Part Listing

Item no	Order for replacement		Description
	Part or set	No Off	
1	n/a	1	Guide Arm and Roller Set
2	SK131s	1	Roller mouth assembly
3	n/a	1	Support Post
4	SK133s	1	Latch Set
5	n/a	1	Drum Shaft
6	n/a	1	Drum Assembly
7	SK136s	1	Spring Canister
8	SK138s	1	Swivel Assembly (Air / Water) 3/8"
8	SK139s	1	Swivel Assembly (Air / Water / Oil) 1/2"
8	SK140s	1	Swivel Assembly (Grease)
9	SK141s	1	Swivel Seal Set (Air / Water / Oil)
10	MA142s	1	Hose Assembly (Air / Water /) 3/8"
10	SK143s	1	Hose Assembly (Air / Water /) 1/2"
10	SK144s	1	Hose Assembly (Oil) 1/2"
10	SK145s	1	Hose Assembly (Grease)
11	HPA22SG	1	Hose Stopper (Air / Water) 3/8"
11	RHA42s	1	Hose Stopper (Air / Water/ Oil) 1/2"
11	Z10s	1	Hose Stopper (Grease)



Macnaught Pty Limited
ABN 66 000 075 785

41-49 Henderson Street
Turrella NSW 2205 Sydney Australia
Postal Address PO Box 90
Amcliffe NSW 2205 Sydney Australia

T: +61 2 9567 0401
F: +61 2 9597 7773
W: www.macnaught.com.au

Note:

This product should be disposed of according to all applicable local and national government environment regulations and guidelines.



For Warranty Terms and Conditions see macnaught.com.au
For a list of Australian Service Centres see macnaught.com.au